

Historic, Archive Document

Do not assume content reflects current scientific knowledge, policies, or practices.

62,43 Index*

Spring 1952 Price List

PETERS EVERGREEN NURSERY

SHERBURN, MINN.

Fern - Leaved, Ever-
blooming Bleeding Heart
Potted ----- \$1.00 each



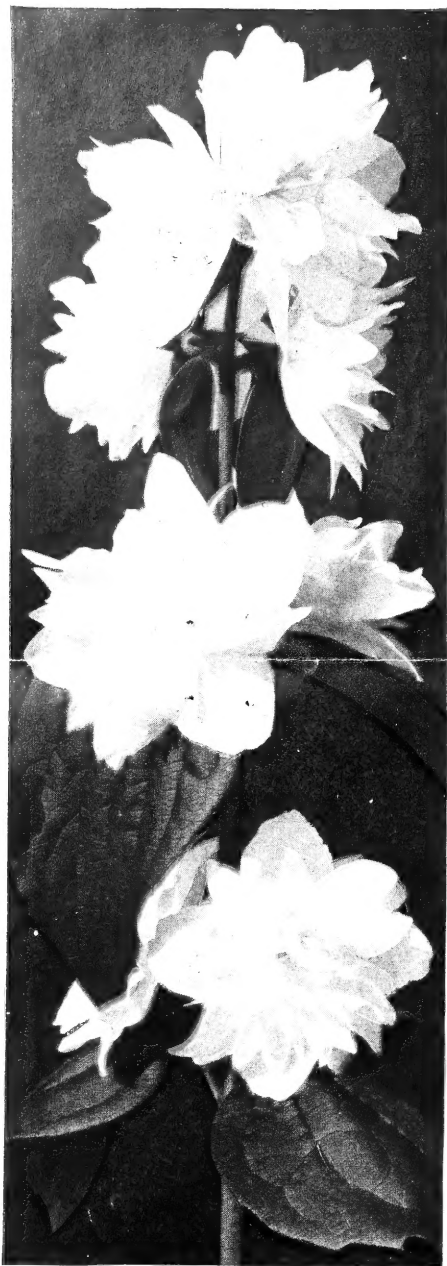
U. S. DEPARTMENT OF AGRICULTURE
LIBRARY
WASHINGTON 25, D. C.

PENALTY FOR PRIVATE USE TO AVOID
PAYMENT OF POSTAGE, \$300
(GPO)

OFFICIAL BUSINESS

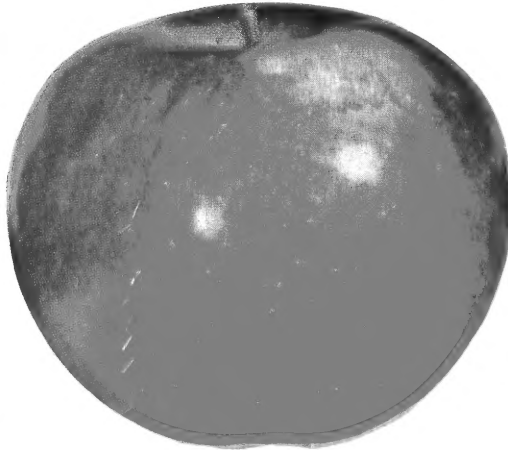
PRINTED MATTER

Library, U. S. Dept. of Agriculture,
WASHINGTON 25, D. C.



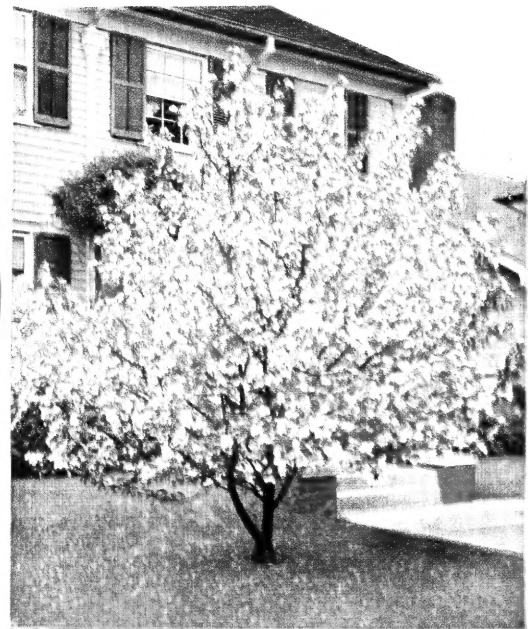
APPLE TREES — All Varieties

Prices: 5 - 6 foot \$1.40 each
 4 - 5 foot \$1.00 each



HARALSON

One of the BEST WINTER APPLES.



FLOWERING CRAB — HOPA, very hardy,
 Choice 5 to 6 foot Trees \$1.50 each



Let US Help You PLAN Your FOUNDATION PLANTING.
 We have a fine collection of EVERGREENS.

WINDBREAK EVERGREENS

Plant the Best.

Black Hill Spruce and Colorado Blue Spruce.

SIZES:

3 year old seedlings \$5.00 per 100
 5 year old Transplants \$25.00 per 100
 7 year old Tran-plants \$50.00 per 100

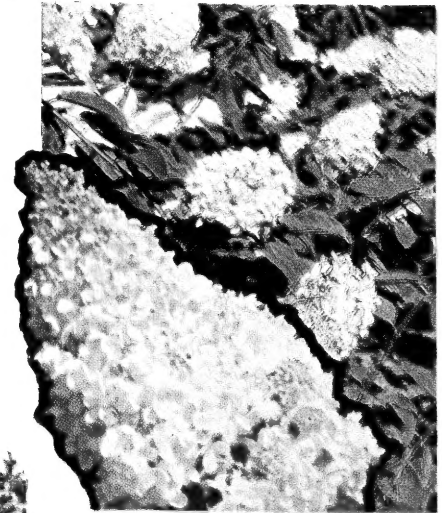
Philadelphus
MINNESOTA SNOWFLAKE

Plant Patent No. 538

New Double Mock Orange

This New MOCK ORANGE is truly outstanding. It has all double white flowers. Very hardy.

Prices: Heavy, 2 to 3 foot
 Size \$1.50 each



HYDRANGEA P.G. \$1.25 each.



PLANT EVERGREENS FOR EVERLASTING BEAUTY

DUG WITH EARTH BALL ON ROOTS, WRAPPED IN BURLAP AT NO EXTRA COST

- COLORADO BLUE SPRUCE** — "Shiners", 12 - 15 inches -- \$2.25
4 foot, Choice Specimens -- 9.00
- MUGHO PINE** — A dwarf growing pine for ornamental planting. 15 - 18 inch spread ---- each \$3.00
- PYRAMIDAL ARBORVITAE** — Choice matched pairs - each \$6.00
- AMERICAN ARBORVITAE** — Good bushy trees, 2 - 3 ft. ea. \$2.75
- JUNIPER VIRGINIAN** — Red Cedar, sheared specimens ea. \$4.75
- THE DUNDEE JUNIPER** — Is the best of the upright green ones. 3 - 4 feet, sheared ---- each \$6.00
2 - 3 feet, sheared ---- each \$5.00
- SAVIN JUNIPER** — Low growing 18 - 24 inches, each ---- \$3.00
- PFITZER JUNIPER** — Low growing, 24 inch spread ---- each \$3.75

- BLACK HILL SPRUCE** — A compact, symmetrical, fast growing tree. 15 to 18 inches, choice trees - \$2.25
18 to 24 inches, choice trees - \$3.00
24 to 30 inches, choice trees - \$3.75
- BALSAM FIR** — Will thrive in partial shade. 5 - 6 ft. - each \$8.00
- PONDEROSA PINE** — The longest needle pine grown. 2 foot, bushy trees ---- each \$2.75

Patented Hybrids

- TEA and POLYANTHA ROSES**
- PEACE**—No. 1 Potted, each \$2.50
- TALLY HO**—No. 1 Potted, ea. \$2.00
- FASHION** - No. 1 Potted, ea. \$2.00
- FRED HOWARD** - No. 1 potted each ---- \$2.75
- VOGUE**—No.1 Potted, Re.l, ea. \$2.25
- WORLD'S FAIR** — No. 1 Potted, Red, each ---- \$1.50

HEDGES

- DWARF NINEBARK** — Easily sheared to form a beautiful hedge. 12 - 18 in., 1 yr., heavy, -- each 30c
12 - 18 in., 1 yr., light -- each 20c
- COTONEASTER RENTIFOLIA** — Glossy green leaves, black berries. 1 yr., branched ---- each 20c
1 yr., 6 - 9 in., ---- each 10c
1 yr., 3 - 4 in. ---- each 5c
- HARDIN STRAIN**, Siberian Elm, Makes a dense hedge if kept sheared. 12 - 18 in., 2 yr. old ---- ea. 10c

PLANT An ORCHARD

GROW YOUR OWN FRUIT IN YOUR OWN BACK YARD.

- APPLES** 5 to 7 ft. ---- ea. \$1.40
4 to 5 ft. ---- ea. 1.00
- PLUMS** 5 to 7 ft. ---- ea. \$1.50
4 to 5 ft. ---- ea. \$1.10

- ORIOLE** — Early Summer Apple
- BEACON** — All-red Summer Apple
- MINJON** — Resembles Jonathan, fall
- PRAIRIE SPY** — Large, Late fall
- WEALTHY** — Well known, fall
- YELLOW TRANSPARENT** — Early Summer
- HARALSON** — Red, Winter
- FIRESIDE** — High quality, Winter
- NORTHWEST GREENING** — Green Winter
- WHITNEY CRAB** — An early Crab
- DCLGO CRAB** — Hardy Jelly Crab

- MONITOR** — Large Red Plum
- REDCOAT** — Free-stone, Red Plum
- HENNEPIN** — A medium Red Plum
- PIPESTONE** — Large, Heavy Producer
- KAGA** — A good Pollinizer.
- TOKA** — A good Pollinizer.
- MINN. No. 387**, A sweet Plum.
- HANSKA** — Apricot flavored Plum

- EARLY RICHMOND CHERRIES** — Heavy. Well branched trees, 5 - 6 ft. ea. \$1.75

Shade and Ornamental Trees For BEAUTY And COMFORT

- AMERICAN ELM** — 3 to 4 in. dia. 15 ft. tall, - ea. \$8.00
8 to 10 feet tall ---- each \$2.50
- LAKE CITY ELM** — Budded on American Elm root. 6 - 8 feet ---- each \$3.00
- MOLINE ELM** — Another sport of American Elm. 6 - 8 feet ---- each \$3.00
- LOMBARDY POPLAR** — 6 - 8 ft. 2 years old ---- each \$1.25
3 - 4 ft., 1 yr. old whips - 3 for \$1.00
- BOLLEANA POPLAR** — 4 - 5 ft. each ---- \$1.00
- RED MAPLE (SCHWEDLER)** — 2 year, field grown ---- each \$6.00
1 year, whips, 6 - 7 ft. - each \$3.75
- RED MAPLE (CRIMSON KING)** — Plant patent No. 735
Leaves stay red all summer. 4 - 5 feet, whips ---- each \$4.00
5 to 6 feet, whips ---- each \$5.00
- SUGAR MAPLE** — A splendid hardy, ornamental tree. 6 - 8 ft., well branched - each \$3.75
- CUT LEAF WEEPING BIRCH** — A graceful, white-barked tree. 7 - 8 feet ---- each \$4.80

- MOUNTAIN ASH** — 7 - 8 feet ---- each \$3.00
- WEEPING WILLOW (NIOBE)** — 1 year, 2 - 3 feet ---- each \$.75
- PYRAMIDAL LINDEN** — 7 - 8 feet ---- each \$4.00

STRAWBERRIES

- JUNE BEARING**
- Dunlap** ---- 100 for \$2.50
- Beaver** ---- 100 for \$2.75
- Arrowhead** ---- 100 for \$3.00
- EVER BEARING**
- Evermore** ---- 100 for \$4.25
- Streamliner** ---- 100 for \$4.25
- New Red Rich** 100 for \$15.00

RASPBERRIES

- LATHAM** — Still the leading commercial variety in many sections. Large red fruit. 25 for \$3.25 50 for \$6.00
- INDIAN SUMMER** An ever-bearing that will produce a good crop, both in June and Sept. Fruit is large, red and of fine quality. 25 for \$3.85 50 for \$7.25

RHUBARB

- CHUPMAN'S CANADA RED** — Large, strong divisions, - each \$7.75
- VALENTINE**—Excellent for freezing. No. 1 divisions ---- each \$7.75

ASPARAGUS

- MARY WASHINGTON** — A very good variety for our soil. Easy to grow. 1 yr. old plants 25 for \$1.50
100 for ---- \$4.00

Hardy Grapes

- FREDONIA**—Black grape, early, Three for ---- \$1.00
- CONCORD** — A black grape, late Three for ---- \$1.00

WINDBREAK TREES

FOR PROTECTION AGAINST SNOW AND WIND

- LAUREL LEAF WILLOW**, 1 yr. old ---- \$3.30
- GOLDEN WILLOW**, 1 year old, each ---- \$3.00
- A new "HARDIN" strain of Chinese Elm, from Canada. Much hardier and especially adapted for windbreaks. 18 - 24 inch, per 100, \$4.00; 2 - 3 ft., per 100, \$5.00; 3 - 4 ft., per 100, \$6.00.
- If ordered early, we can furnish Willow Cuttings, 7 inches at \$7.50 per 1,000.
- AM. ELM** — 3 - 4 ft. ---- \$7.50
- ASH** — 3 - 4 ft. ---- \$7.50
- HACKBERRY**— 2 - 3 ft. -- \$9.00
- HONEYSUCKLE Bella Albida**
This is the only variety that should be used for Windbreak planting. Don't be fooled into buying seedlings of some southern grown stock. None will compare with this old standby. One row, with plants set 4 ft. apart in the row, is all you need to stop the snow. Heavy 2 foot plants ---- each 20c

Climbing Vines

- BOSTON IVY**—Will cling to brick or cement walls. 2 years old, No. 1 plants ---- each 80c
- CLEMATIS JACKMANI**—Purple flowers.
- CLEMATIS HENRYI** — White Flowers — Potted plants, either color ---- each \$1.50
- HONEYSUCKLE** — SCARLET TRUMPET, extremely hardy, red flowers, 2 year plants ---- ea. 65c

Begonia

- TUBEROUS ROOTED** Will grow best in shade. Mixed colors, double Camelia flowered. Large bulbs, 2 inches, up ---- 4 for \$1.00

Clump Birch

- Give your planting the natural "North Woods" effect. Two or more stems, 5 - 6 ft. -- each \$3.00

MUMS

- We have quite a variety of colors including AURORA, BUTTERBALL, CHIPPEWA and others.
- Potted Plants ---- ea. 45c
10 for ---- \$3.50

Climbing Roses

- 7 SISTERS**—No. 1 Potted ea. \$1.00
- BLAZE**—No.1 Potted -- ea. \$1.00
- WHITE DAWN** — No.1 Potted, each ---- \$1.00

Flowering Shrubs

INEXPENSIVE FOUNDATION PLANTING

- SPIREA VAN HOUTTEI** —(Bridal Wreath)- 18 - 24 in each \$4.00
- RED BARBERRY** — Bright red Foliage, 3 yr. old plant - each \$4.45
- HONEY SUCKLE**—(ZABELI) Dark red flowers, 2 - 3 ft., each \$7.75
- DWARF NINEBARK** — One of our best shrubs, 2 - 3 ft., each \$6.60
- PRUNUS CISTENA** — Dwarf Red Leaf Plum. 2 - 3 ft. - each \$1.25
- PRUNUS TRILOBA**—"Rose Tree of China", 2 - 3 ft. ---- each \$1.00
- CANADIAN LILAC**— (ROTHOMAGENSIS) 18 - 24 in., each \$7.75
- SNOWBALL (VIBURNUM OPUL. STERILIS)** 12 - 18 in., each \$7.75
- HYDRANGEA A.G.** — "Hill of Snow", 2 - 3 ft., each ---- \$1.25

Bring This LIST With You and Receive Five "GLAD" Bulbs FREE!

Visit PETERS NURSERY and pick out your own stock.

FREE BOOKLET, "HOW TO PLANT" With each Nursery Order

— PIXWELL GOOSEBERRIES
Hardy, very productive, 18 to 24 in., Branched
Each ---- \$7.75

We Do Not Dig Trees on Sundays. PREVIOUS ORDERS MAY BE CALLED FOR ON SUNDAY.



**BROWNELL EVER-
BLOOMING SUB - ZERO
ROSES**

A New Race From Hardier Species
That Bloom All Summer.

CURLY PINK -- Blooms
in Clusters.

CEDRIC ADAMS — A large
double Carmine.

VELVETIER — Semi -
double — Dark Red.



"QUEEN OF THE LAKES"
Sub-Zero BROWNELL ROSE



LILY PONS — White with pure
Yellow Center.

V For VICTORY—Large double
Yellow.

SHADES OF AUTUMN — A
Bi-Color, Large Flowers.

All our BROWNELL ROSES
are Potted in Clover Set, No.
3 pots. They can be planted
any time during the Summer.

Prices -- \$1.75 each.

Enjoy the Hardy
**FRENCH
LILACS**

Field grown, own root.
2 year plants, 18 to
24 inches;

\$1.50 each

12 to 18 inches;

\$1.25 each

**CLEMATIS
JACKMANI**
CLIMBING
VINE

Price
\$1.50
Each.

